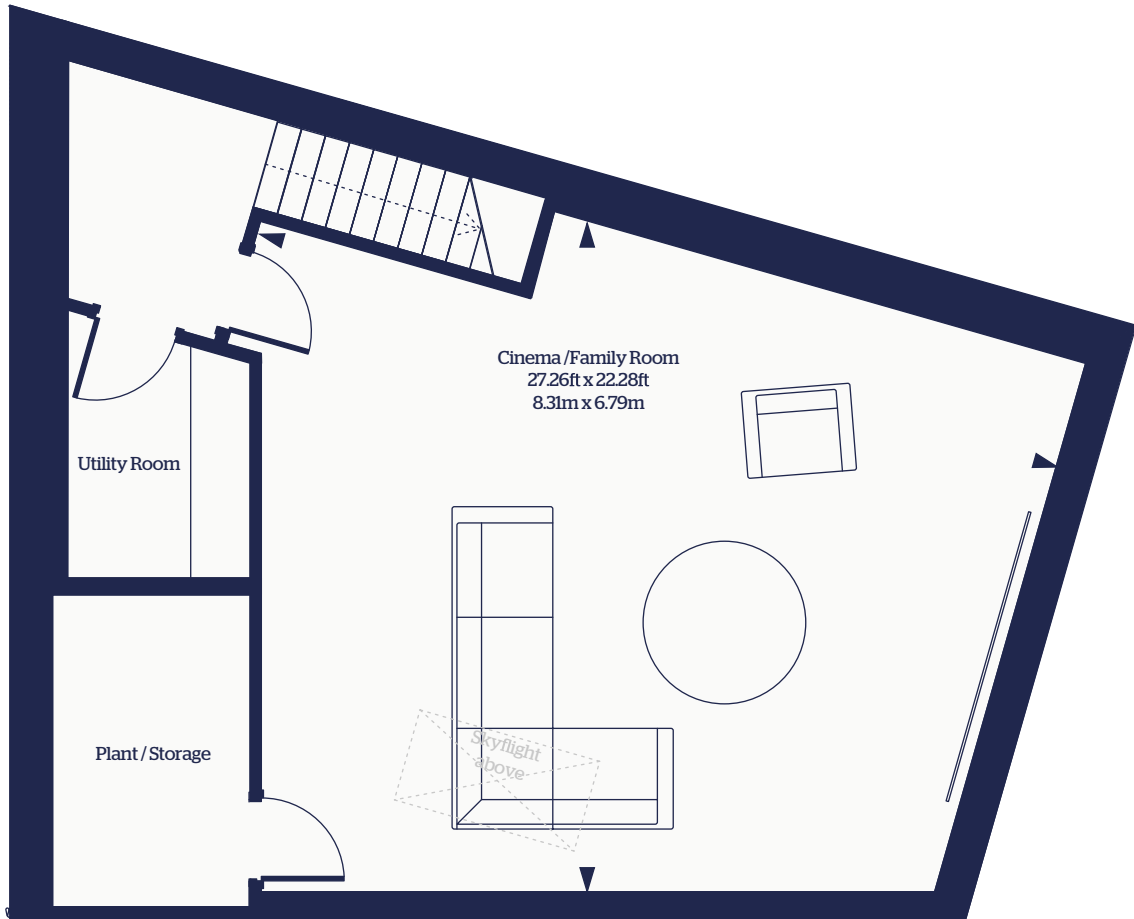


# Battersea Square Mews

## House 3 - Basement

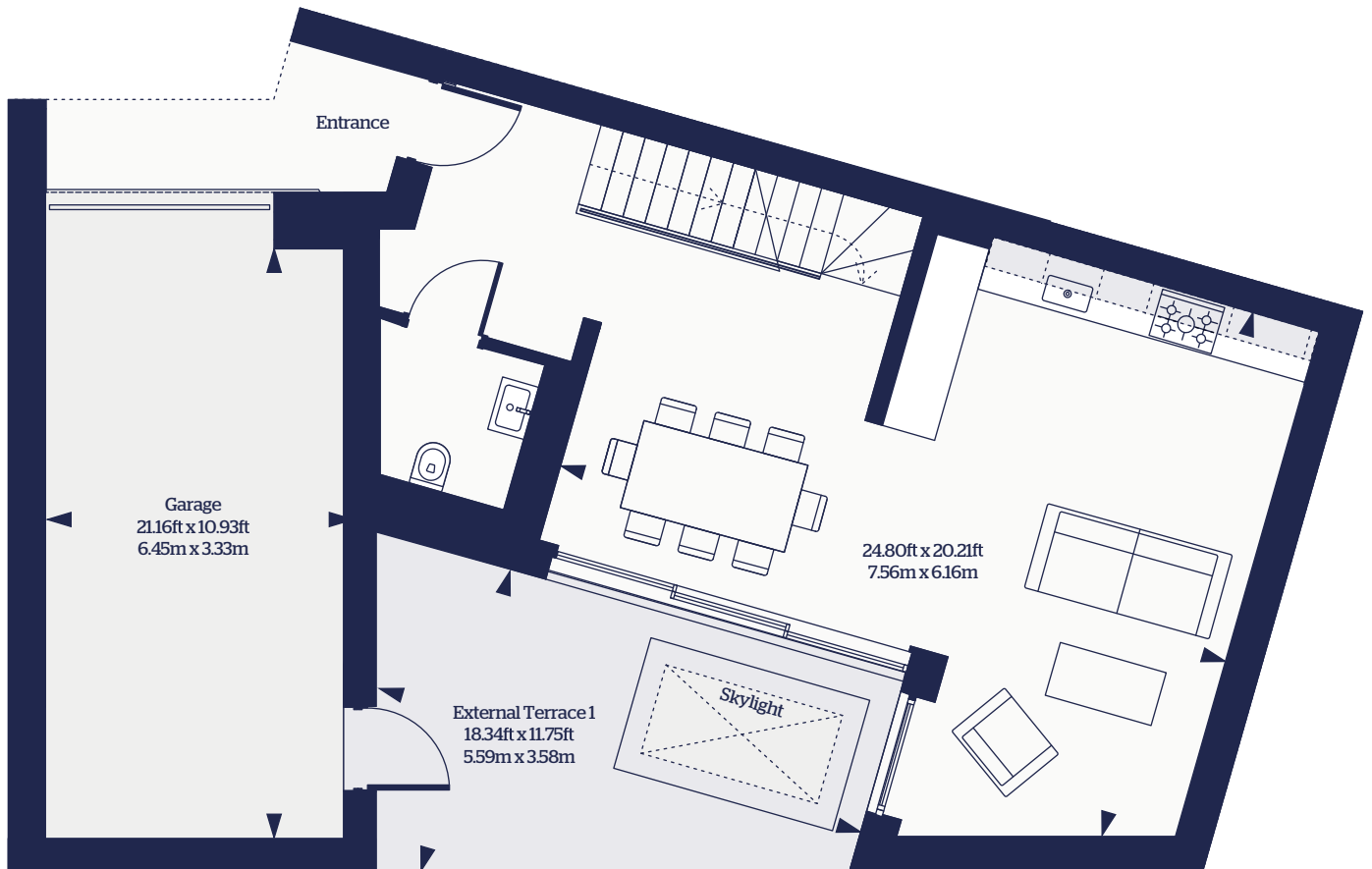


Total property internal space: 297418ft<sup>2</sup> Total property external space: 64206ft<sup>2</sup> Garage: 24348ft<sup>2</sup>

Please note, this information is subject to review and therefore potential change. All stated dimensions are subject to change. You should be advised, therefore, not to order any other goods which depend on accurate dimensions before carrying out a check measure within your reserved property. Please ask the Sales Advisor for details.

# Battersea Square Mews

## House 3 - Ground floor

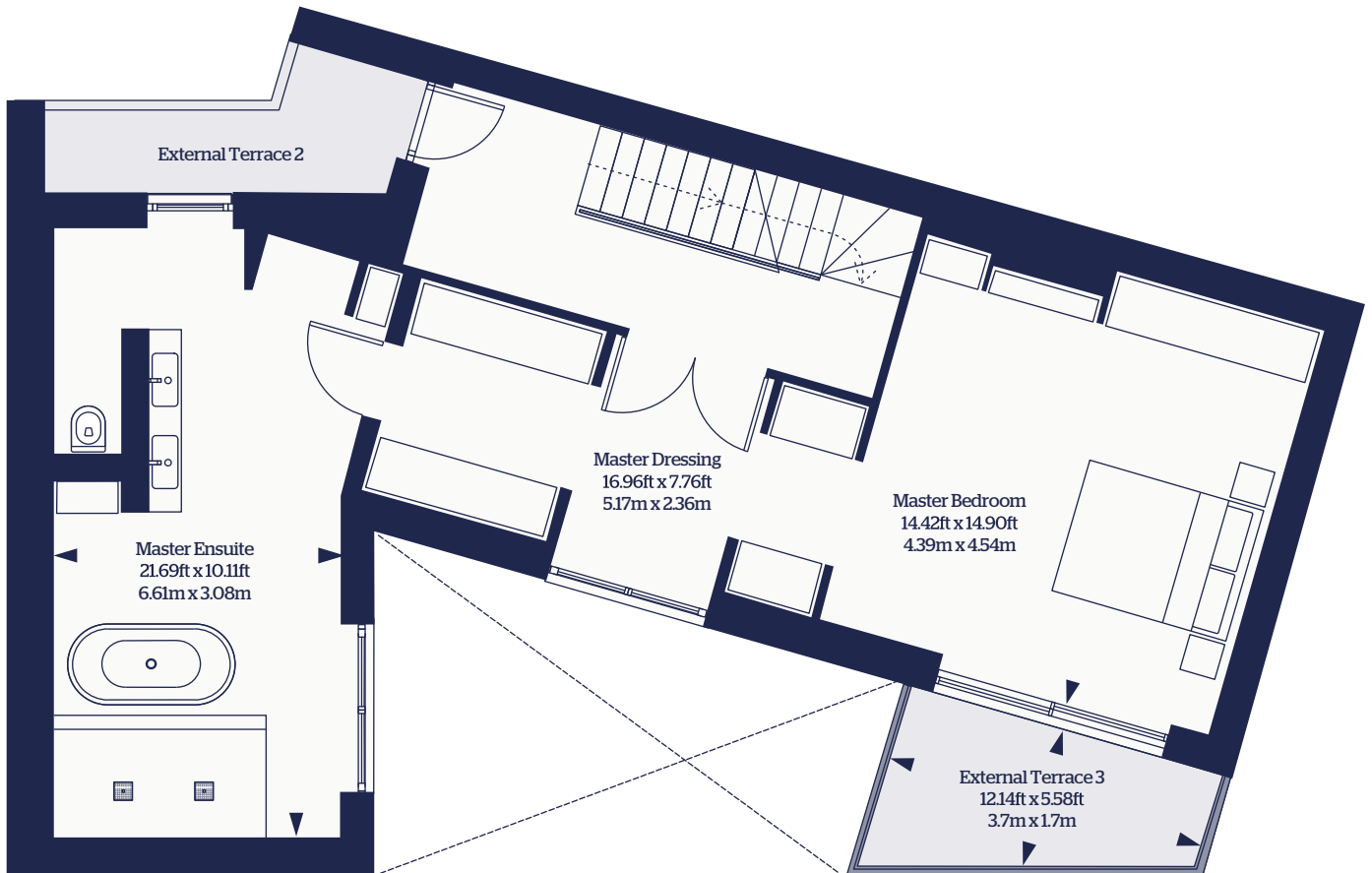


Total property internal space: 297418ft<sup>2</sup> Total property external space: 64206ft<sup>2</sup> Garage: 24348ft<sup>2</sup>

Please note, this information is subject to review and therefore potential change. All stated dimensions are subject to change. You should be advised, therefore, not to order any other goods which depend on accurate dimensions before carrying out a check measure within your reserved property. Please ask the Sales Advisor for details.

# Battersea Square Mews

## House 3 - 1st floor

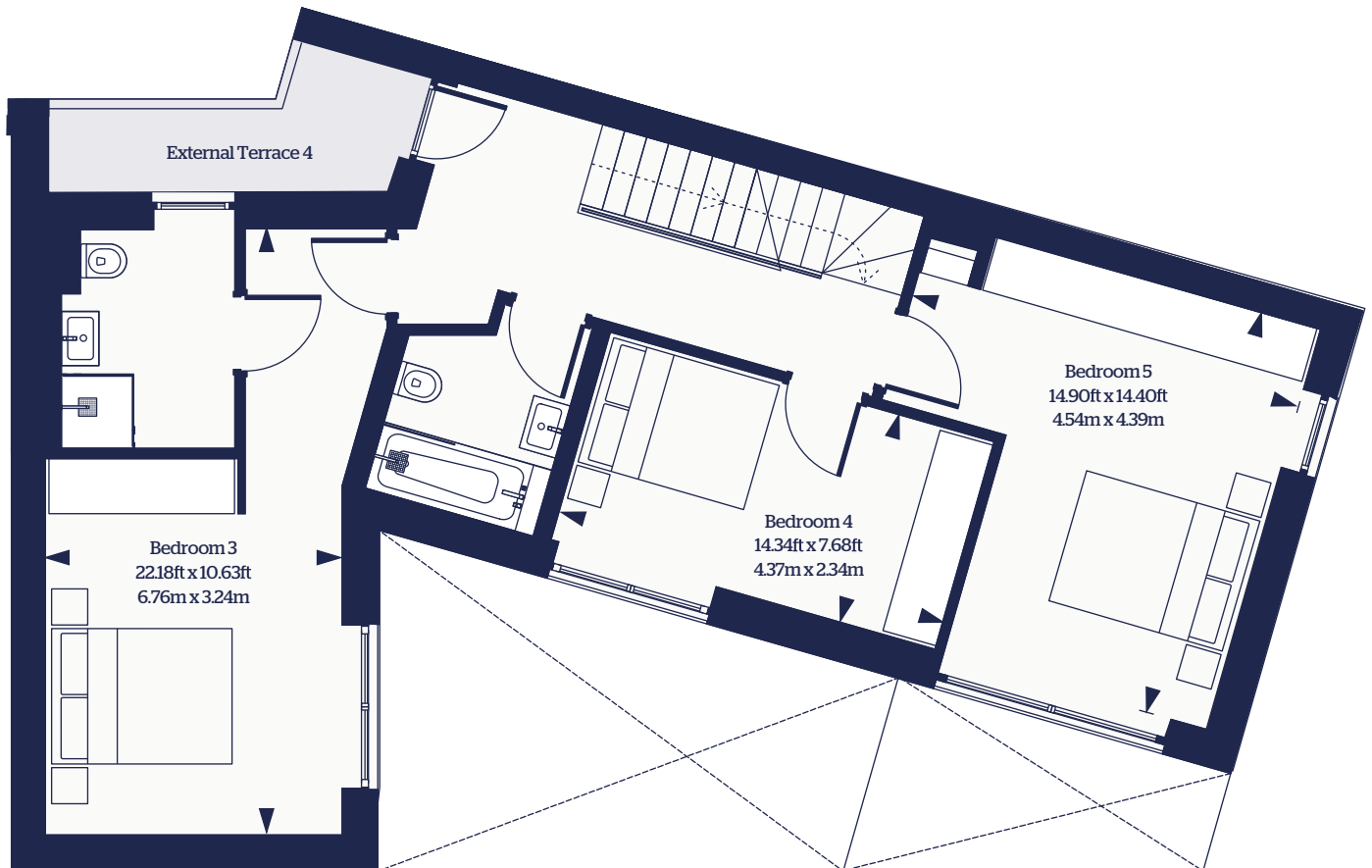


Total property internal space: 297418ft<sup>2</sup> Total property external space: 64206ft<sup>2</sup> Garage: 24348ft<sup>2</sup>

Please note, this information is subject to review and therefore potential change. All stated dimensions are subject to change. You should be advised, therefore, not to order any other goods which depend on accurate dimensions before carrying out a check measure within your reserved property. Please ask the Sales Advisor for details.

# Battersea Square Mews

## House 3 - 2nd floor

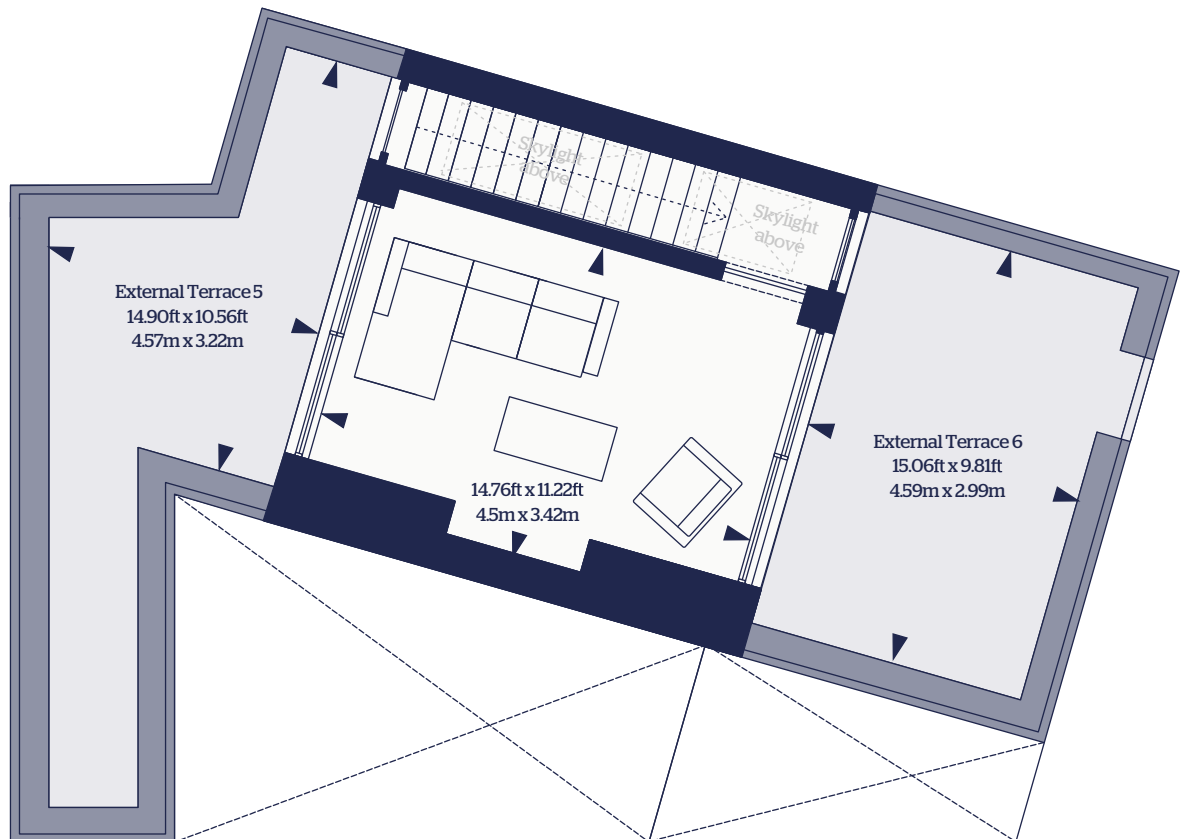


Total property internal space: 297418ft<sup>2</sup> Total property external space: 64206ft<sup>2</sup> Garage: 24348ft<sup>2</sup>

Please note, this information is subject to review and therefore potential change. All stated dimensions are subject to change. You should be advised, therefore, not to order any other goods which depend on accurate dimensions before carrying out a check measure within your reserved property. Please ask the Sales Advisor for details.

# Battersea Square Mews

House 3 - 3rd floor



Total property internal space: 297418ft<sup>2</sup> Total property external space: 64206ft<sup>2</sup> Garage: 24348ft<sup>2</sup>

Please note, this information is subject to review and therefore potential change. All stated dimensions are subject to change. You should be advised, therefore, not to order any other goods which depend on accurate dimensions before carrying out a check measure within your reserved property. Please ask the Sales Advisor for details.