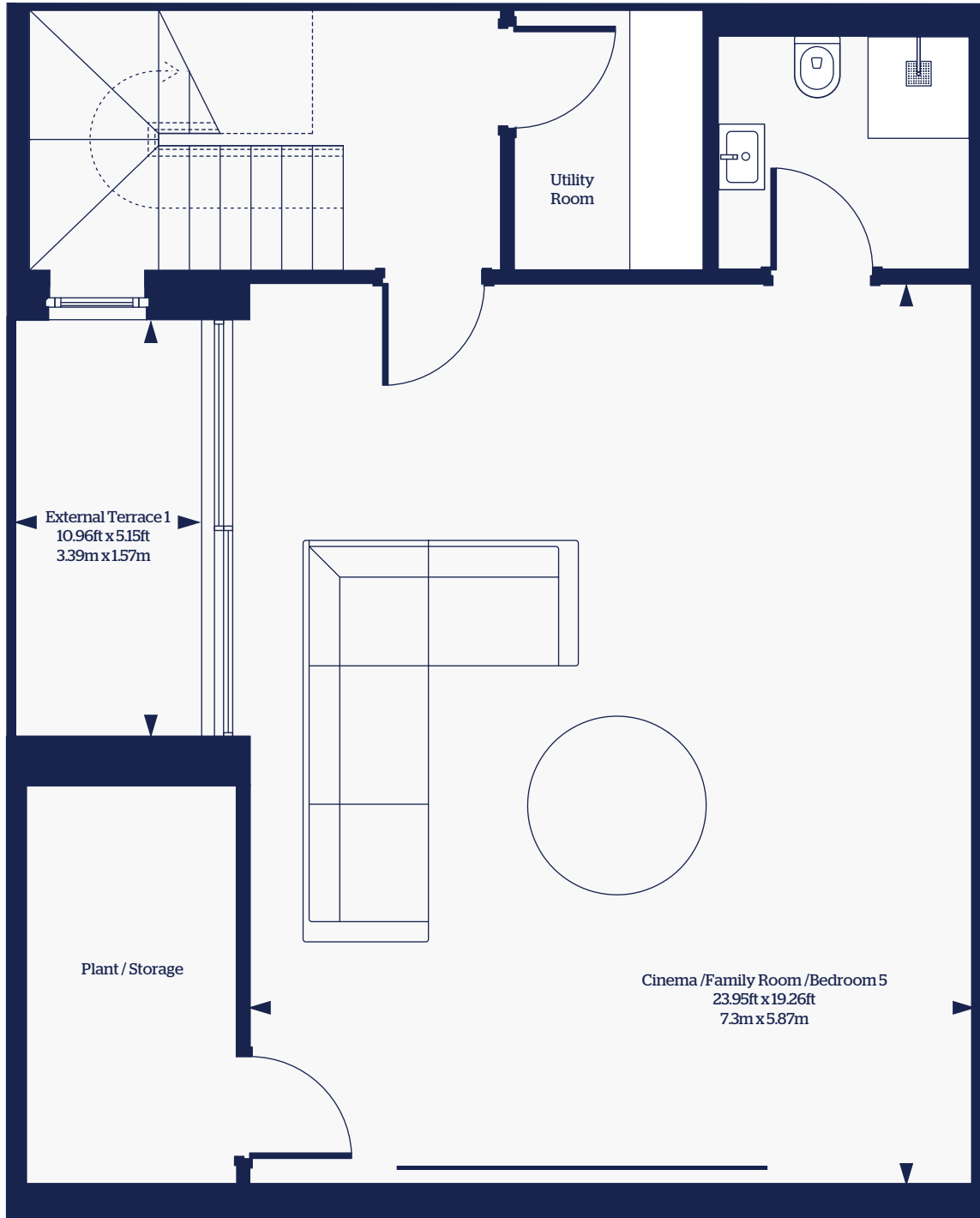


Battersea Square Mews

House 2 - Basement

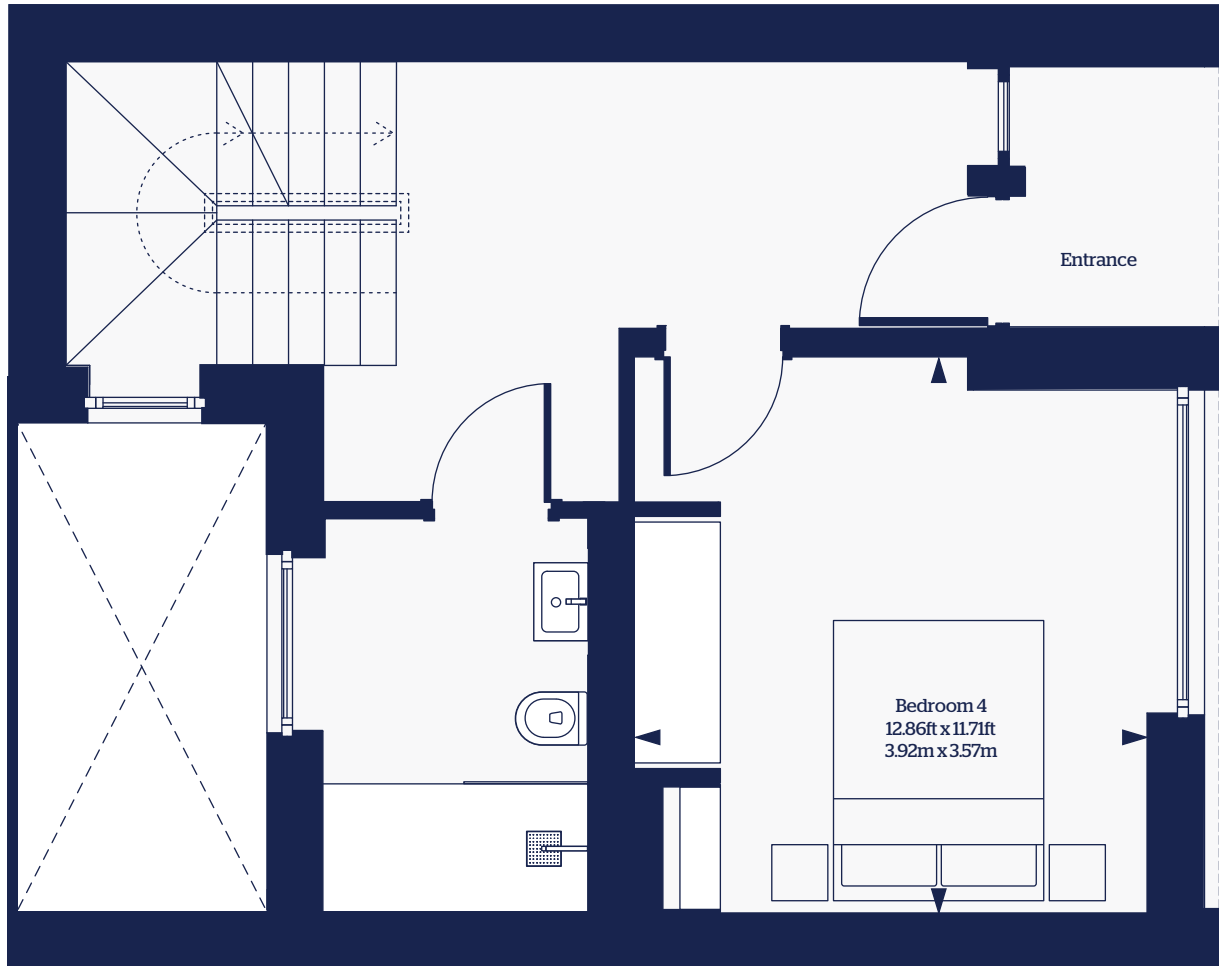


Total property internal space: 2403.80ft² Total property external space: 347.35ft²

Please note, this information is subject to review and therefore potential change. All stated dimensions are subject to change. You should be advised, therefore, not to order any other goods which depend on accurate dimensions before carrying out a check measure within your reserved property. Please ask the Sales Advisor for details.

Battersea Square Mews

House 2 - Ground floor

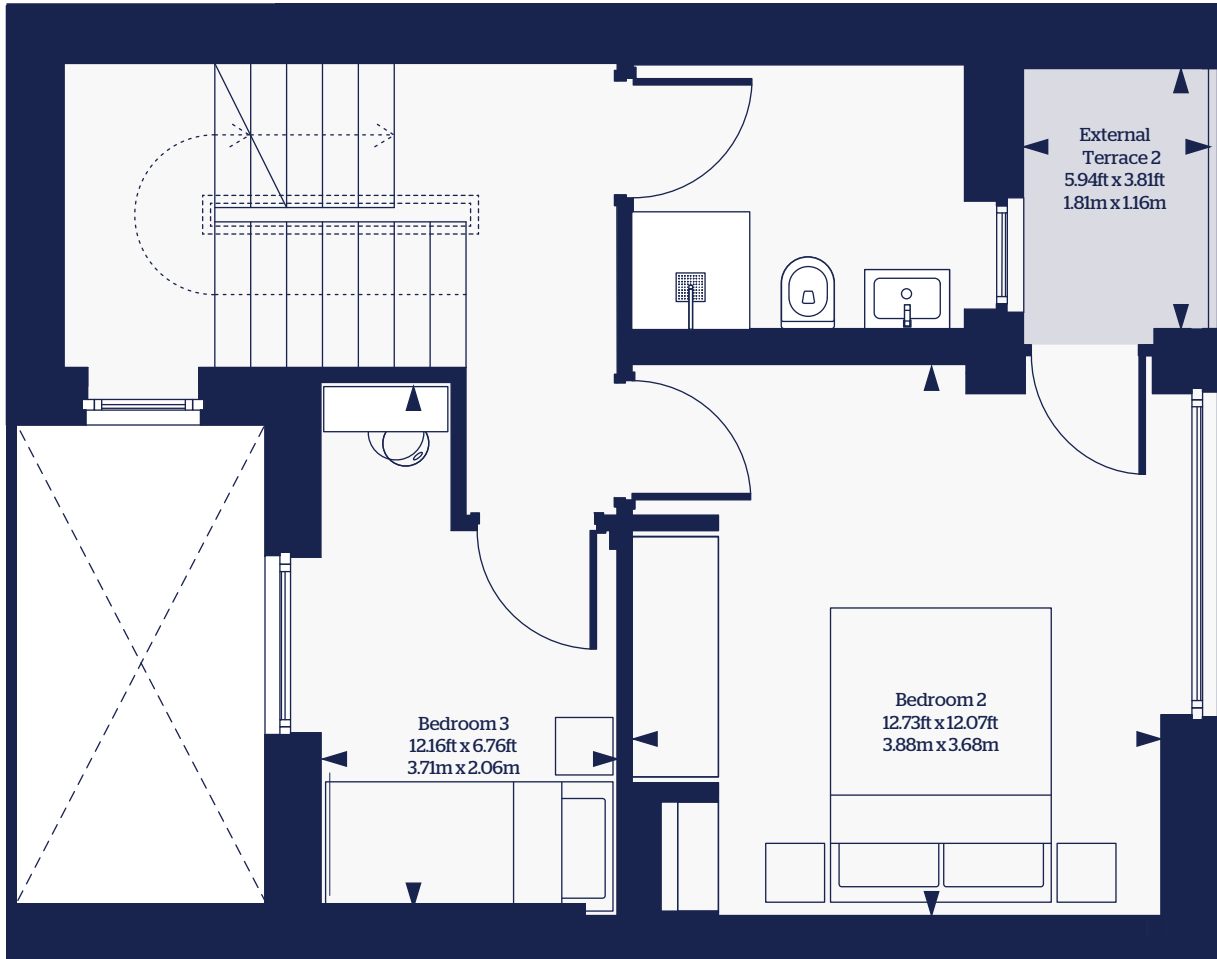


Total property internal space: 2403.80ft² Total property external space: 347.35ft²

Please note, this information is subject to review and therefore potential change. All stated dimensions are subject to change. You should be advised, therefore, not to order any other goods which depend on accurate dimensions before carrying out a check measure within your reserved property. Please ask the Sales Advisor for details.

Battersea Square Mews

House 2 - 1st floor

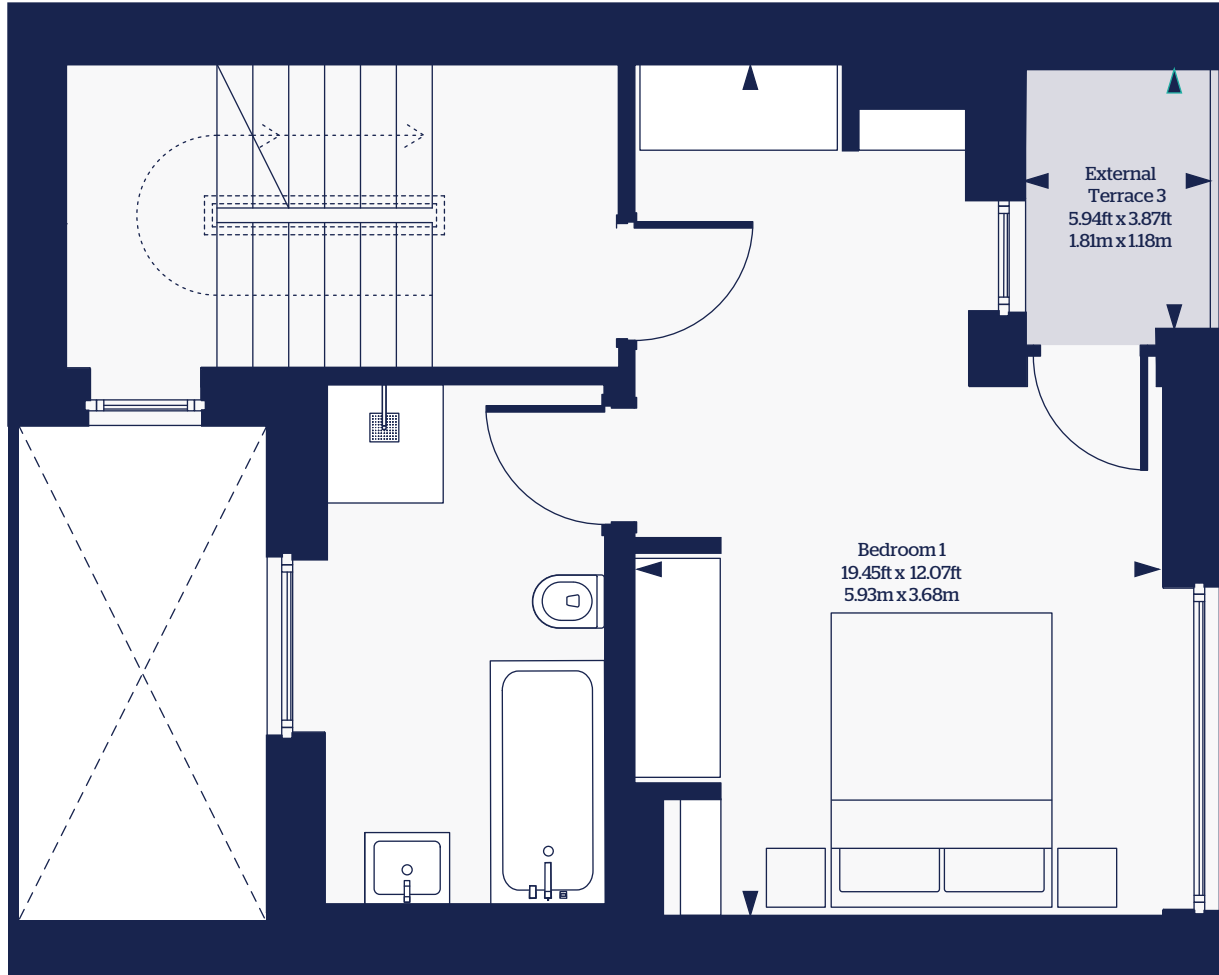


Total property internal space: 2403.80ft² Total property external space: 347.35ft²

Please note, this information is subject to review and therefore potential change. All stated dimensions are subject to change. You should be advised, therefore, not to order any other goods which depend on accurate dimensions before carrying out a check measure within your reserved property. Please ask the Sales Advisor for details.

Battersea Square Mews

House 2 - 2nd floor

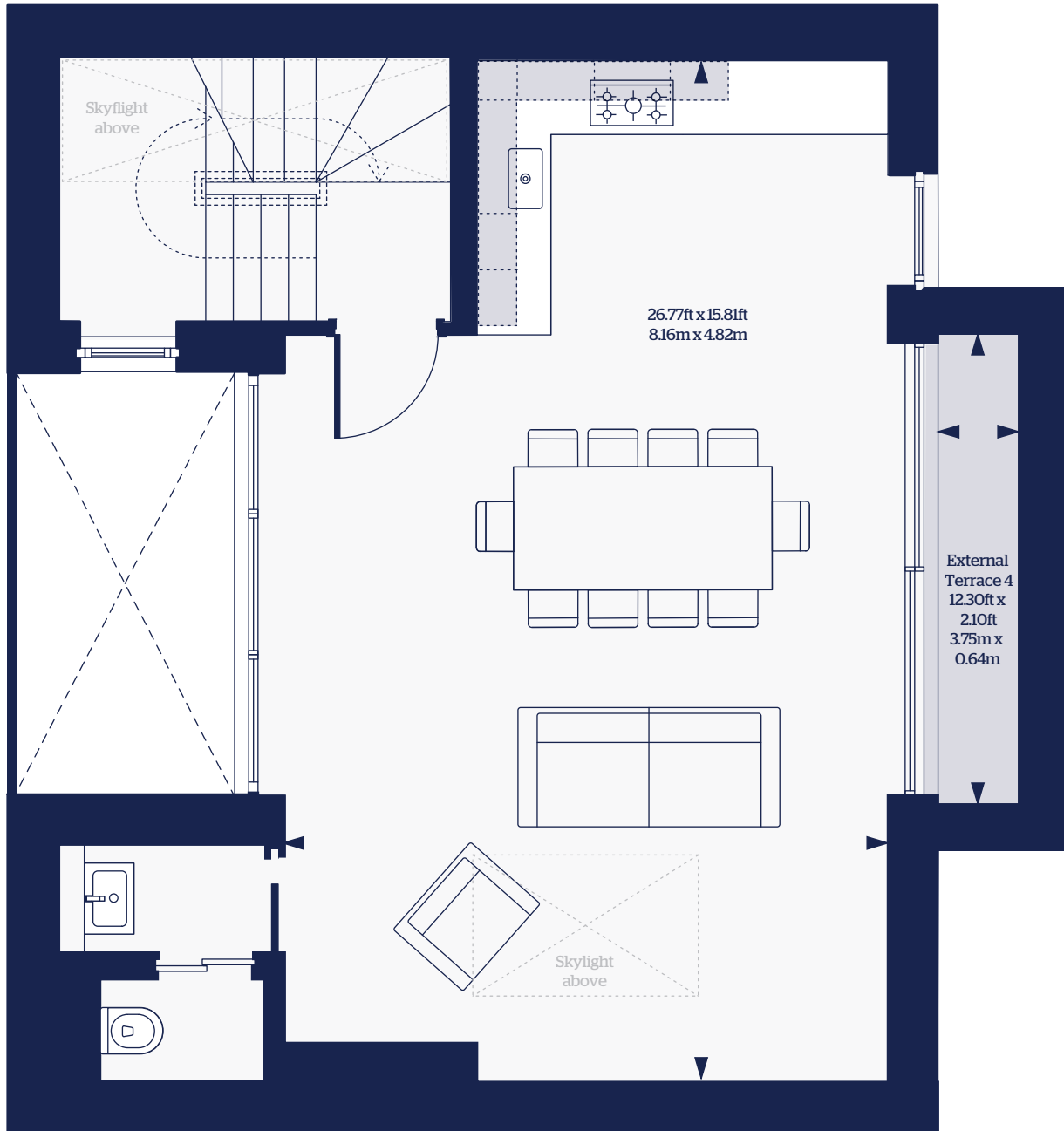


Total property internal space: 2403.80ft² Total property external space: 347.35ft²

Please note, this information is subject to review and therefore potential change. All stated dimensions are subject to change. You should be advised, therefore, not to order any other goods which depend on accurate dimensions before carrying out a check measure within your reserved property. Please ask the Sales Advisor for details.

Battersea Square Mews

House 2 - 3rd floor



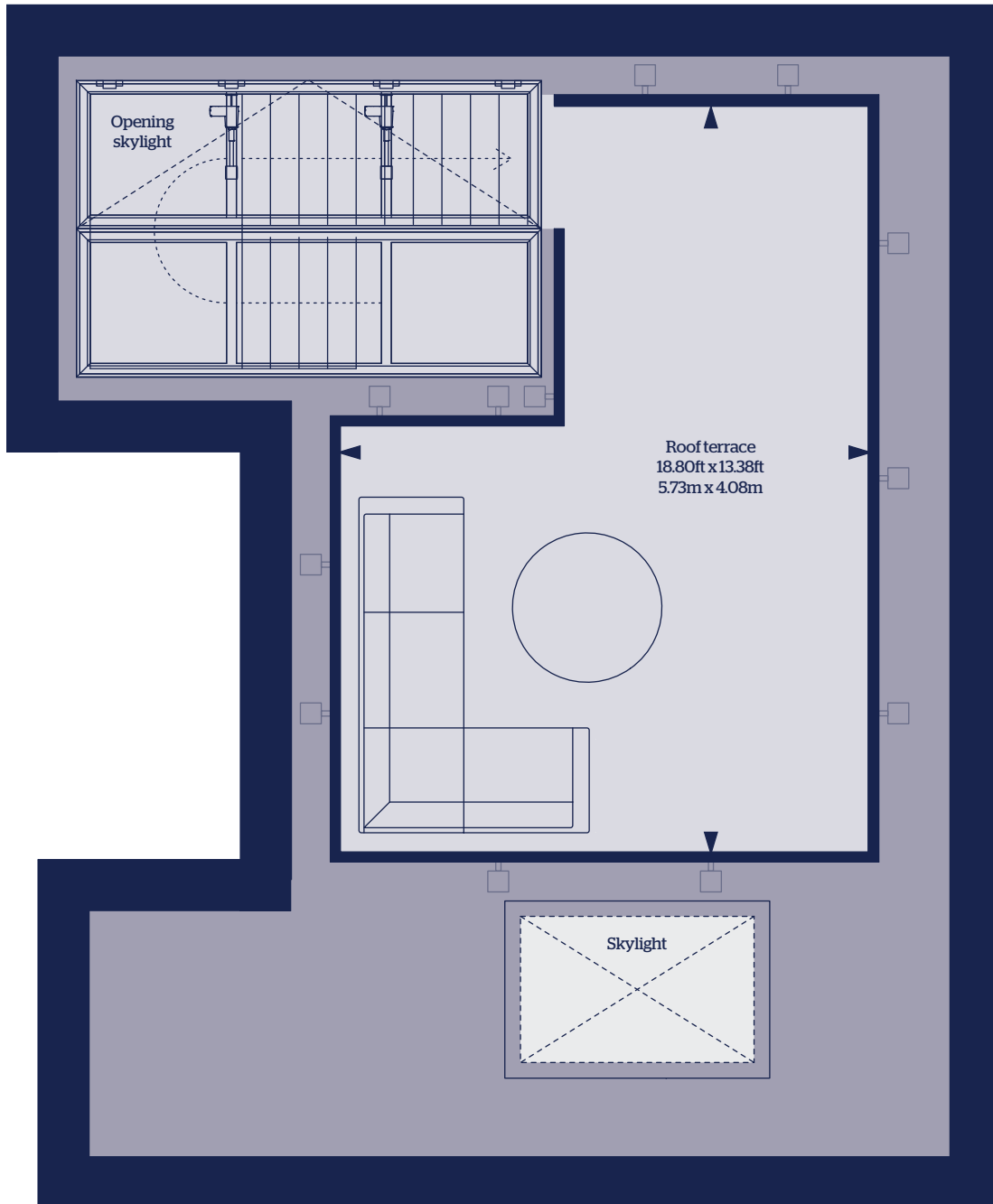
Total property internal space: 2403.80ft²

Total property external space: 347.35ft²

Please note, this information is subject to review and therefore potential change. All stated dimensions are subject to change. You should be advised, therefore, not to order any other goods which depend on accurate dimensions before carrying out a check measure within your reserved property. Please ask the Sales Advisor for details.

Battersea Square Mews

House 2 - Roof terrace



Total property internal space: 2403.80ft² Total property external space: 347.35ft²

Please note, this information is subject to review and therefore potential change. All stated dimensions are subject to change. You should be advised, therefore, not to order any other goods which depend on accurate dimensions before carrying out a check measure within your reserved property. Please ask the Sales Advisor for details.